

Canon

HJ18ex7.6B

EXPAND FREEDOM IN HD IMAGE CAPTURED WITH ENHANCED COMPACT HD LENS



INNOVATION

In TV Optics Since 1958

Toward 100 years anniversary

HDXS

FEATURES OF NEW DRIVE UNIT

■ Aberration Correction and Virtual Functions Enabled without Lens Initialization

To date, aberration correction functions have often been employed on 2/3" HDTV cameras for broadcast use. The new drive unit of the HJ18ex7.6B can output accurate lens position data from the moment the power is turned on. Additionally, Canon's newly developed high-performance encoder does not require initialization as earlier units did, and this contributes to the quick start when shooting.

■ More Advanced Virtual Operability and More Precise Virtual Image Expression

- The new drive unit uses three 20-pin connectors. It provides virtual pins even with the digital full servo controllers, thereby enabling more advanced operation.
- Canon's new high-performance encoder is capable of extremely high-precision output. This simplifies calibration when composing virtual and live-action images, thus resulting in more accurate composites.

■ Saved Power Consumption

The HJ18ex7.6B can operate even longer on battery power than its predecessor. Power consumption while the zoom, focus, and iris functions are not being operated has been reduced by approximately 20%, further enhancing the mobility of the camera operator.

■ Simple Display Operations

Canon's unique display-based functions, which are highly regarded in the industry, have helped a variety of operations. We have listened to our customers, and a new simplified mode has brought the operation method even easier and closer to the ideal.

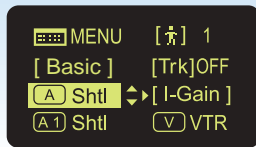


■ Digital Functions

The Canon drive unit integrates a variety of operations, stored digitally, that can be manipulated using the display.

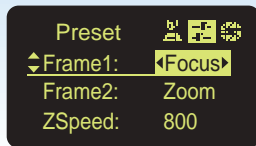
Shuttle Shot

By memorizing any two focal lengths, the Canon drive unit can automatically "shuttle" between two points, moving in either direction. As an example, this function is effective for shots in which an operator wants to start from a wide angle and then zoom in rapidly on to an object.



Frame Preset

An angle of view can be preset in either of two memories and the lens will zoom at the highest speed, or in a preset zoom speed, to the preset position with the push of a simple button. As an example, this function is effective for situations such as interview programs, where it is necessary to switch between bust shot and wide shot.



Speed Preset

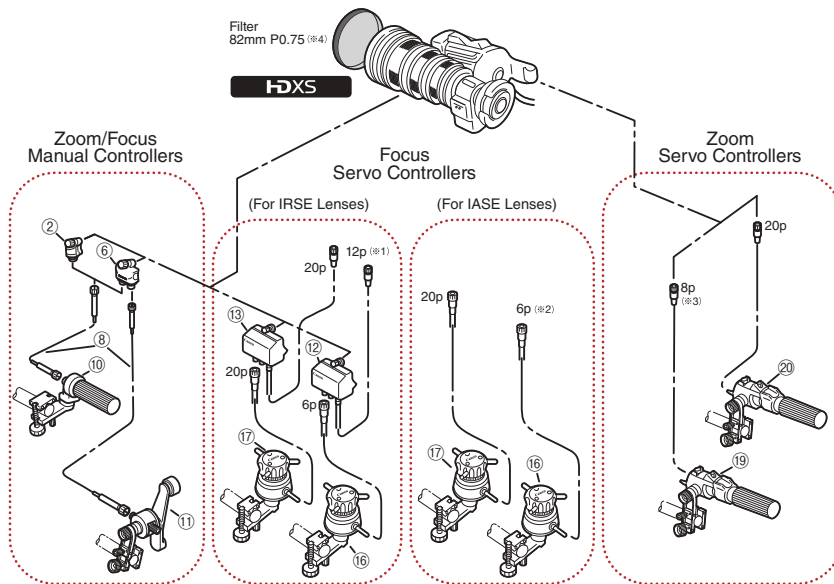
A specific zoom speed can be preset in memory making it possible to repeat the zoom speed as often as you like with the push of a simple button. Using a preset speed when zooming in and zooming out contributes to create stable images, particularly with slow zooms.



SPECIFICATIONS

HJ18ex7.6B	16:9		4:3	
	1.0x	2.0x	1.0x	2.0x
Built-in Extender				
Zoom Ratio			18 : 1	
Local Length	7.6-137mm	15.2-274mm	7.6-137mm	15.2-274mm
Maximum Relative Aperture	1:1.8 at 7.6-103mm 1:2.4 at 137mm	1:3.6 at 15.2-206mm 1:4.8 at 274mm	1:1.8 at 7.6-103mm 1:2.4 at 137mm	1:3.6 at 15.2-206mm 1:4.8 at 274mm
Angular Field of View	64.6°×39.1° 4.0°×2.3°	35.1°×20.1° 2.0°×1.1	60.1°×46.9° 3.7°×2.8°	32.3°×24.5° 1.8°×1.4°
M.O.D.	0.56m (10mm with Macro)			
Object Dimensions at M.O.D.	65.5×36.8cm at 7.6mm 3.8×2.1cm at 137mm	32.8×18.4cm at 15.2mm 1.9×1.1cm at 274mm	60.4cm×45.3cm at 7.6mm 3.5cm×2.6cm at 137mm	30.2×22.7cm at 15.2mm 1.8×1.3cm at 274mm
Approx. Size	W×H×L = 160.5×105.0×206.2mm			
Approx. Mass	1.58kg			
Object Dimensions with Macro at M.O.D.	6.7×3.8cm at 7.6mm (10mm with Macro)		6.1×4.6cm at 7.6mm (10mm with Macro)	

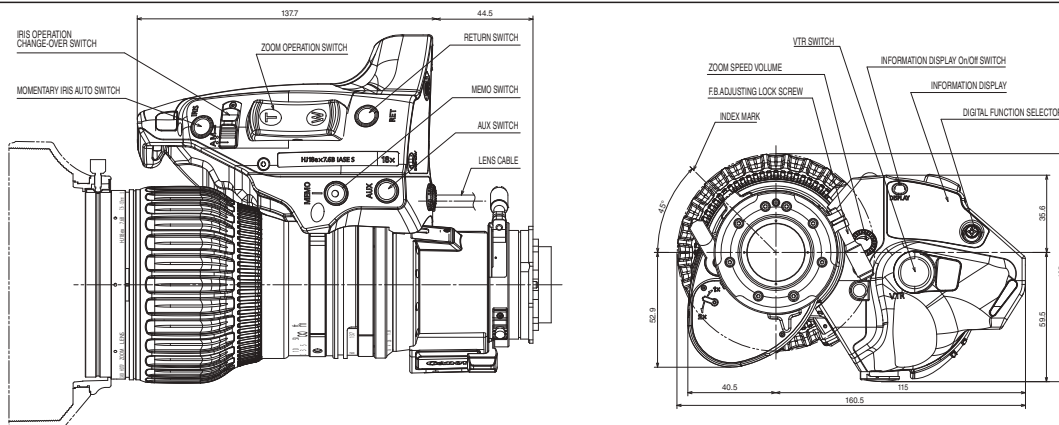
ACCESSORIES



#	Unit	Description
②	FFM-100	Flex Focus Module
⑥	FFM-200	Flex Dual Module
⑧	FC-40	Flex Cable
⑩	FFC-200	Flex Focus Controller
⑪	FZC-100	Flex Zoom Controller
⑫	FPM-420	Focus Positional Servo Module
⑬	FPM-420D	Focus Positional Servo Module
⑯	FPD-400 ^{**5}	Focus Positional Demand
⑰	FPD-400D	Focus Positional Demand
⑲	ZSD-300M	Zoom Servo Demand
⑳	ZSD-300D	Zoom Servo Demand

- (※1) CC-2012 conversion cable is necessary to connect between IRSE Digital Drive Lens and FPM-420.
 (※2) CC-2006 conversion cable is necessary to connect between IASE Digital Drive Lens and FPD-400.
 (※3) CC-2008 conversion cable is necessary to connect between New Digital Drive Lens and ZSD-300M.
 (※4) For the optical accessories, the 82mm diameter P0.75 filters are applicable. The filters are to be attached to the lens barrel. (UV/ Clear/ Cross/ Snow Cross/ Sunny Cross/ Polarized Light/ Softer/ ND8)
 (※5) FPD-400 is not available from Canon stock.

DIMENSIONS



North & South America Canon U.S.A., Inc.

Imaging Technologies & Communications Group
 Broadcast and Communications Sales & Marketing
 Division(Headquarters)
 One Canon Park
 Melville, NY 11747-3336
 Tel:+1(800)321-4388
 Email:bcvtv@usa.canon.com
<http://www.canonbroadcast.com/>

Chicago

100 Park Blvd. Itasca, IL 60143
 Tel:+1(630)250-6236 Fax:+1(630)250-0399

Atlanta

5625 Oakbrook Pkwy. Norcross, GA 30093
 Tel:+1(770)849-7890 Fax:+1(770)849-7888

Los Angeles

15955 Alton Parkway Irvine, CA 92618
 Tel:+1(949)753-4330 Fax:+1(949)753-4337

Dallas

3200 Regent Blvd. Irving, TX 75063
 Tel:+1(972)409-8871 Fax:+1(972)409-8869

Latin America

Tel & Fax:+1(954)757-0980

Mexico

Canon Mexicana S.de R.L. de C.V.
 Professional Broadcast & Film Industry Business
 Department
 Blvd. Manuel Avila Camacho No.138 Col. Lomas
 de Chapultepec Mexico 11000 D.F.
 Tel:555249 4900 Fax:555249 4901

Canada

Canon Canada, Inc.
 Broadcast and Communications Div.
 6390 Dixie Road
 Mississauga, Ontario, L5T 1P7, Canada
 Tel:+1(905)795-2012 Fax:+1(905)795-2140

Europe/Africa/Middle East Canon Europe Ltd

Broadcast products Div.
 3 The Square, Stockley Park
 Uxbridge Middlesex
 United Kingdom UB11 1ET
 Tel:+44 (0)20 8588 8140
 Fax:+44 (0)20 8588 8603
 Email : tvprod@canon-europe.com
<http://www.canon-europe.com/tv-products/>

Australia

Canon Australia Pty. Ltd.
 CCI Division
 1 Thomas Holt Drive, North Ryde, NSW 2113,
 Australia
 Tel:+61(0)2-9805-2000

China

Canon (China) Co., Ltd.
 Broadcast Equipment Products
 15F Jinbao Building No.89 Jinbao Street
 Dongcheng District, Beijing 100005, China
 Tel:+86-10-8513-9999 Fax:+86-10-8513-9128
<http://www.canon.com.cn>

Canon Hongkong Co., Ltd.

19F The Metropolis Tower, 10 Metropolis Drive,
 Hungghom, Kowloon, Hong Kong
 Tel:+852-2170-2828
<http://www.canon.com.hk>

Asia/Japan Canon Inc. (ICP GROUP 5)

30-2, Shimomaruko 3-chome, Ohta-ku, Tokyo
 146-8501, Japan
 Tel:+81(0)3-3757-7453 Fax:+81(0)3-3757-7086

Canon Singapore Pte Ltd.

1 HarbourFront Avenue, #04-01 Keppel Bay Tower,
 Singapore 098632
 Tel:+65-6799-8888
<http://www.canon.com.sg>

Canon Korea Consumer Imaging Inc.

Canon Bldg. 5F, 168-12 Samseong-dong,
 Gangnam-gu, Seoul, 135-090, Korea
 Tel:+82-2-2191-8500
<http://www.canon-ci.co.kr>

Canon

Specifications subject to change without notice.