



4488
Directional Headset



4466
Omnidirectional Headset

Quickstart guide for Headset Microphones



Warranty

DPA Headset Microphones are covered by a two-year limited warranty.

Service & repair

If you are not satisfied with the characteristics exhibited by this product, please contact your nearest DPA Microphones representative for support.

CE marking

This product conforms to all relevant directives approved by the European Commission.



© Copyright 2021



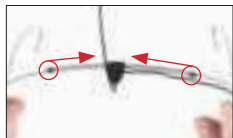
d p a m i c r o p h o n e s . c o m



Placement of an omni headset

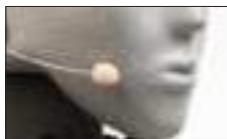


The microphone capsule is correctly positioned when it sits close to (but not touching) your face, at the corner of your smile.



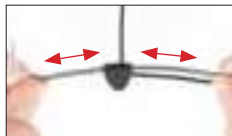
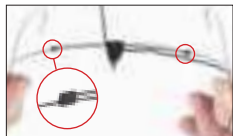
We suggest that you expand the frame and then place it on your head before adjusting it to the correct size.

Placement of a directional headset

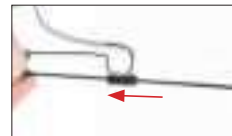


The positioning of this mic, due to its directional characteristics, is essential as the low-frequency level will change according to the distance to the mouth. Mount the mic 2-3 cm (1 in) from the corner of the mouth to ensure optimal sound quality.

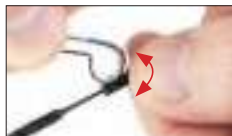
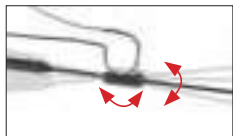
Adjusting frame size



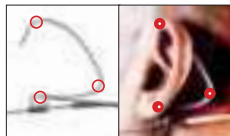
Adjusting boom length



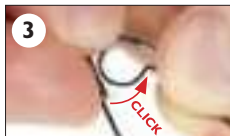
Adjusting boom height



Adjusting ear grips



Flipping boom (left to right side)



Detach the boom pole from the ear grip by gently pulling the boom down (starting at the back and tipping forward). (fig. 1) Move the cable to the other side of the cable guide. (fig. 2) Move the boom pole to the other side and reattach it by gently pushing up until it clicks onto the ear grip. (fig. 3) Release the sliding lock and turn the boom pole 180°. (fig. 4) Move the sliding lock back on the ear grip and it's ready to use. (fig. 5)

90° cable management system

