



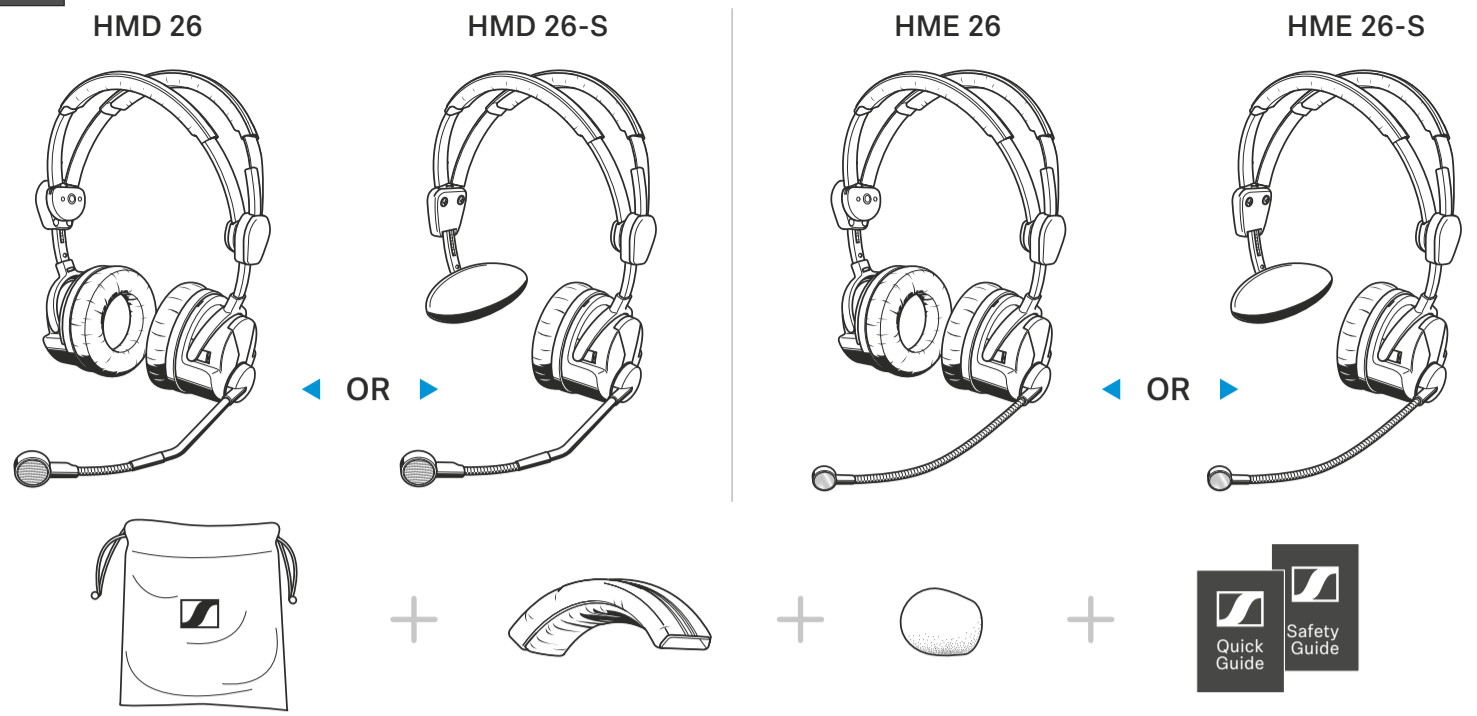
HMD 26 | HMD 26-S HME 26 | HME 26-S

Quick Guide
Kurzanleitung
Guide rapide
Guía rápida
Guía de inicio rápido
Guia rápido
Beknopte handleiding
Krótka instrukcja obsługi
Snabbguide

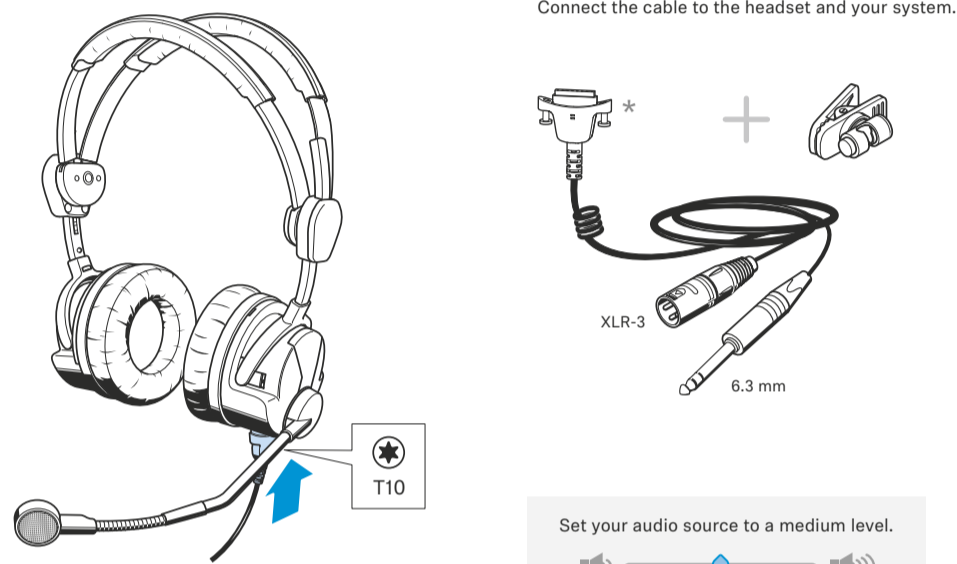
Kort vejledning
Pikaohje
Γρήγορος οδηγός
Kısa Kılavuz
Краткая инструкция
快速指南
快速使用指南
クイックガイド
퀵 가이드

SENNHEISER

In the box

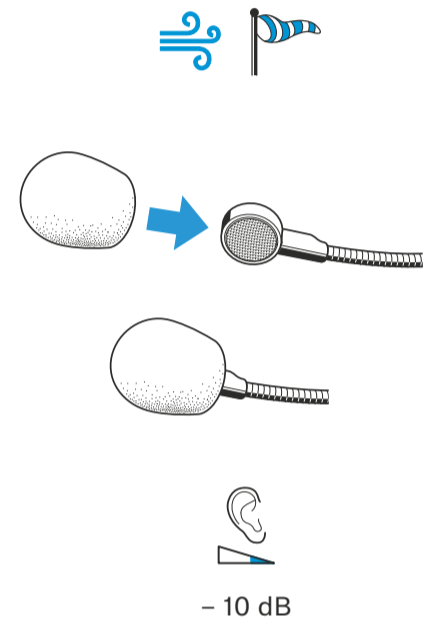


Connecting the headset

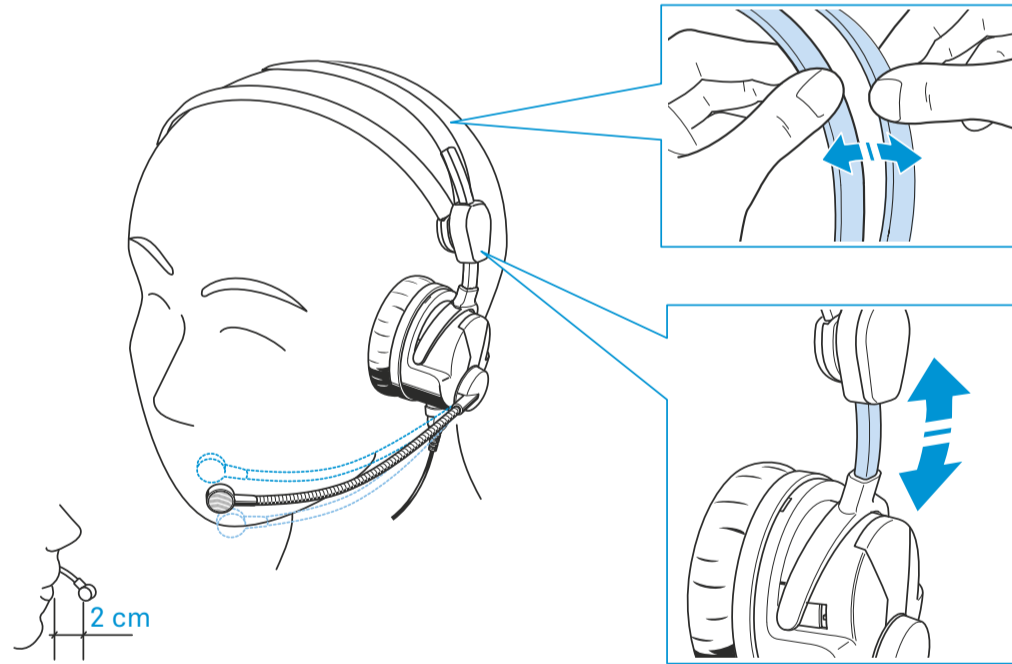
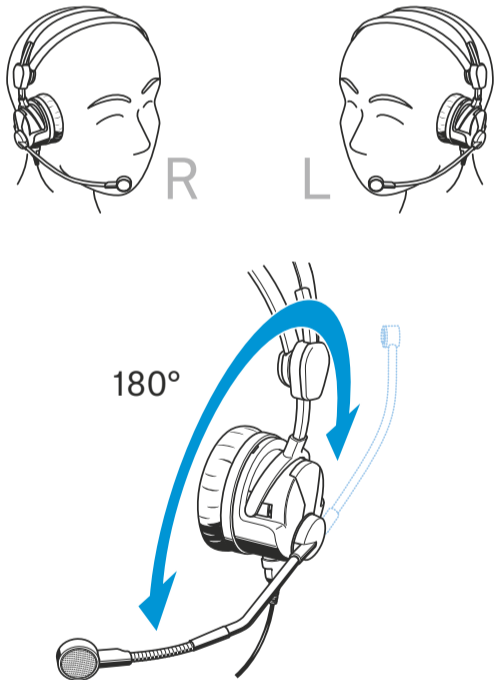


*Cable not included: Cables with different connectors available - see page 2

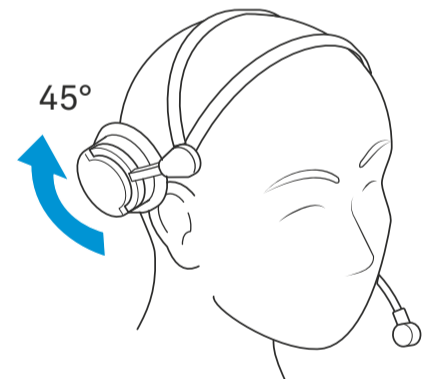
Using the windshield



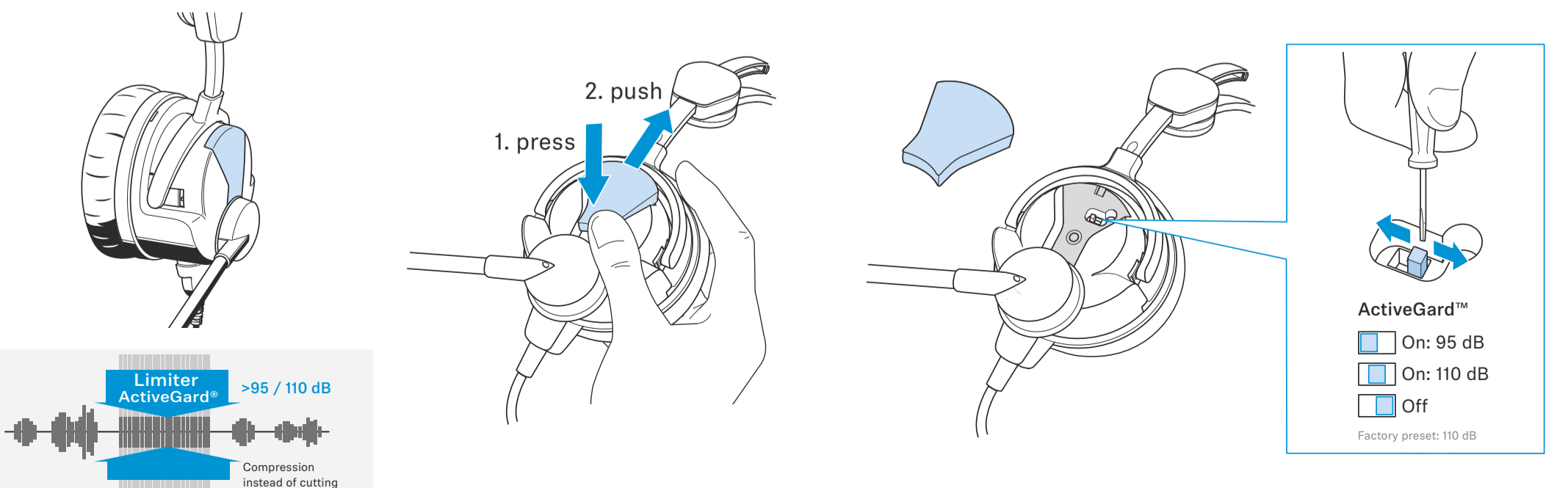
Wearing the headset



Single-sided listening



Switching ActiveGard™

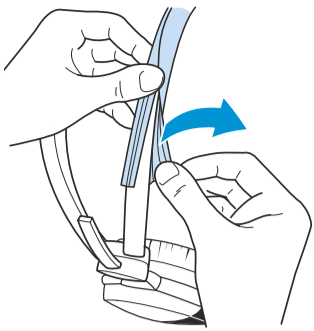


www.sennheiser.com/download

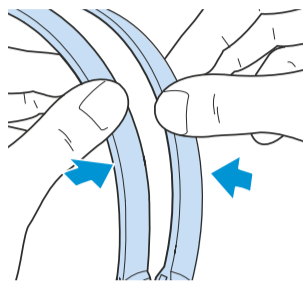
Sennheiser electronic SE & Co. KG
Am Labor 1, 30900 Wedemark, Germany
www.sennheiser.com
Printed in Germany, Publ. 03/24, 597288/A01

Replacing the headband

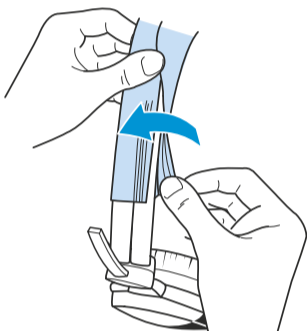
Wearing with large headband padding



1 Remove both small headbands.

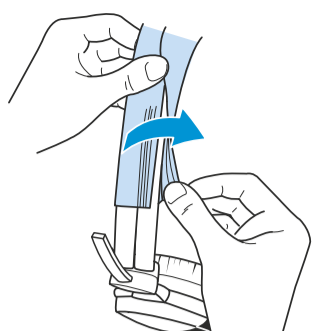


2 Collapse the split headband.

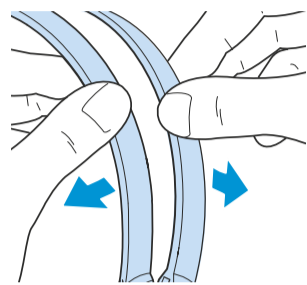


3 Mount the large headband padding.

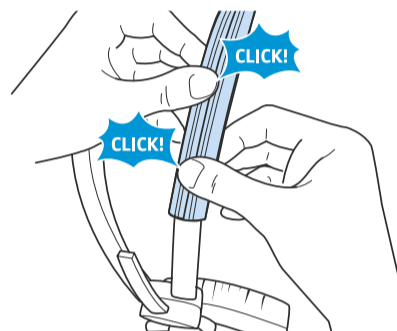
Wearing with small headbands



1 Peel off the large headband padding.

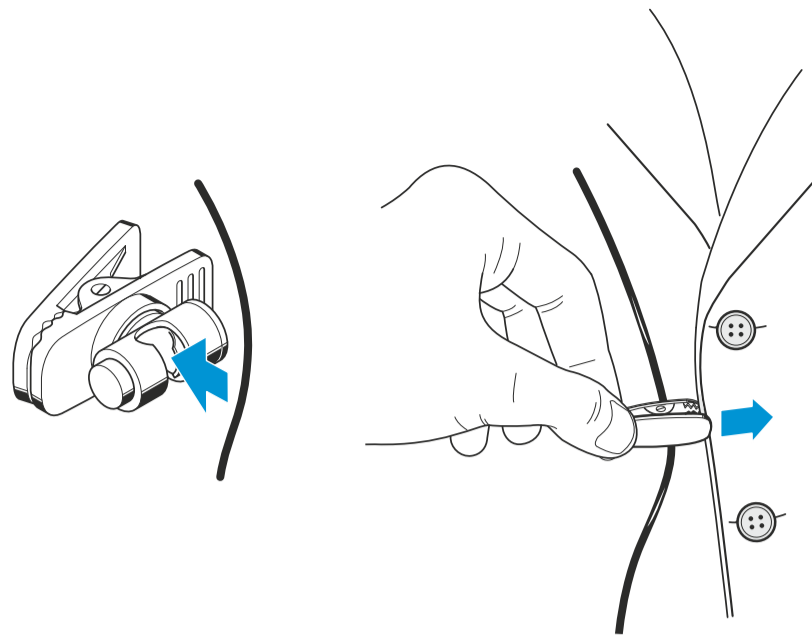


2 Pull the headband carefully apart.

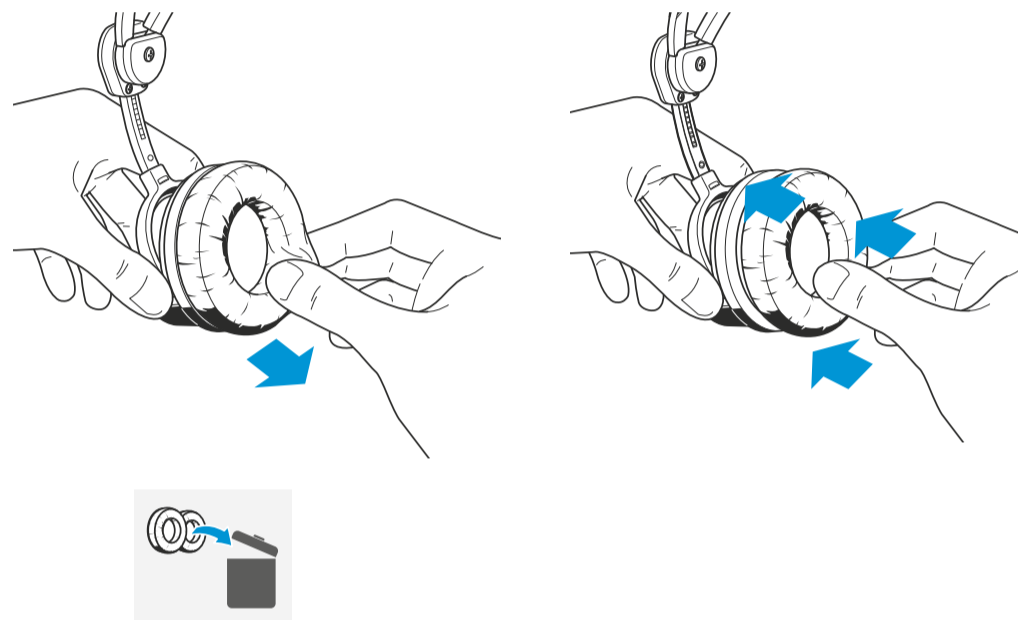


2 Mount the small headbands.

Using accessories



Replacing the ear pads



Specifications

Headphone	HMD 26	HMD 26-S	HME 26	HME 26-S
Transducer principle	dynamic, closed			
Ear coupling	supra-aural			
Frequency response	6 Hz – 18,000 Hz			
Impedance	64 Ω			
Characteristic SPL	105 dB SPL @ 1kHz, 1mW			
ActiveGard Level	95 dB SPL/110 dB SPL @ 1 kHz			
Max SPL (ActiveGard off)	128 dB SPL			
THD	< 0.1% @ 1kHz, 100 dB SPL			
Contact pressure	3.6 N			

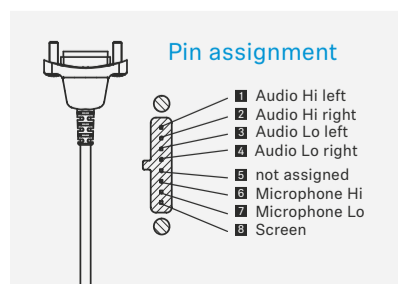
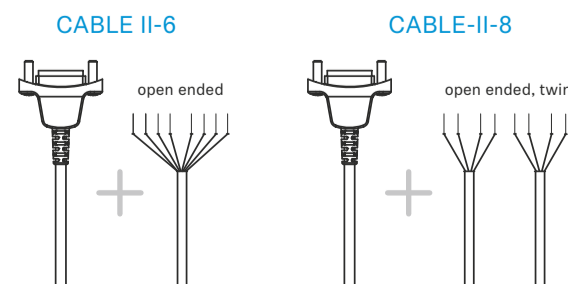
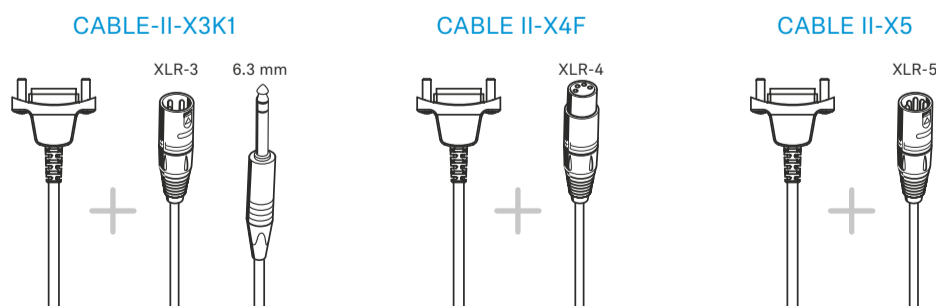
Microphone	HMD 26	HMD 26-S	HME 26	HME 26-S
Type	BMD 434		BKE 10-4	
Transducer principle	dynamic		pre-polarized condenser	
Frequency response	40 Hz - 18,000 Hz		40 Hz - 20,000 Hz	
Directivity	hyper cardioid		cardioid	
Output voltage	0.5 mV/Pa @ 1 kHz		16 mV/Pa @ 1 kHz	
Impedance	300 Ω		-	
Interface	balanced		phantom powered 48 V	

General Data				
Ambient temperature	Operation: -15 °C to +55 °C Storage: -40 °C to +70 °C			
Weight without cable	approx. 200g	approx. 130 g	approx. 200g	approx. 130 g

Cleaning



Available cables



- Pin assignment**
- 1 Audio Hi left
 - 2 Audio Hi right
 - 3 Audio Lo left
 - 4 Audio Lo right
 - 5 not assigned
 - 6 Microphone Hi
 - 7 Microphone Lo
 - 8 Screen